



# CHAMELEON LIGHTING

CATALOG NUMBER: \_\_\_\_\_

TYPE: \_\_\_\_\_

JOB NAME: \_\_\_\_\_

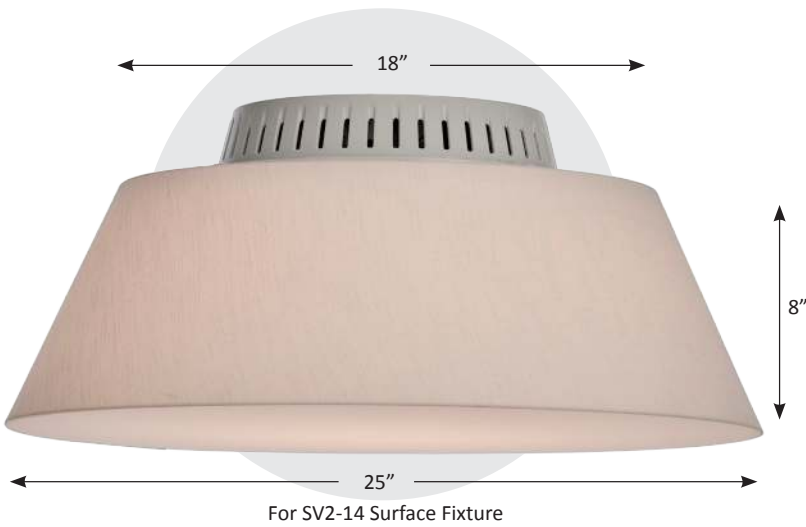
NOTES: \_\_\_\_\_

\_\_\_\_\_

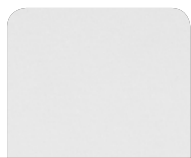
\_\_\_\_\_

\_\_\_\_\_

## TAPERED DRUM CLADDING KITS



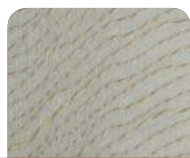
### MATERIAL SWATCHES



WHITE ACRYLIC



LINEN



LEAF



RAIN

### PRODUCT SPECIFICATION

STYLE	SIZE	FINISH	LIGHTING ELEMENT
<input type="checkbox"/> TD	<input type="checkbox"/> SV2-14 for 14" Surface Fixture	<input type="checkbox"/> W White Acrylic <input type="checkbox"/> L Linen <input type="checkbox"/> E Leaf <input type="checkbox"/> R Rain	<b>**CHOOSE LIGHT ENGINE SPECIFICS ON NEXT PAGE</b>

Grayed areas are codes for creating your lighting specification  
**Example Product Spec. - TD-SV2-14-W**

10 Strecker Rd. / Ellisville, MO 63011 / Ph. (888) 896-2101 / Fax (888) 896-2101 / info@chameleonltg.com

[WWW.CHAMELEONLTG.COM](http://WWW.CHAMELEONLTG.COM)

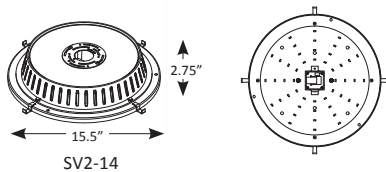
Specifications subject to change without notice.

**MADE  
IN THE USA**



# CHAMELEON LIGHTING

## SURFACE SERIES VERSION 2



### PRODUCT SPECIFICATION

FAMILY	COLOR TEMP.*	CRI
<input type="checkbox"/> SV2-14	<input type="checkbox"/> CT 2200K - 6500K	<input type="checkbox"/> 8 >80
	<input type="checkbox"/> 30 3000K	
	<input type="checkbox"/> 35 3500K	

\*HMI Wireless remote control accessory necessary for tunable fixtures

Grayed areas are codes for creating your lighting specification

Example Product Spec. - SV2-14-CT-8

10 Strecker Rd. / Ellisville, MO 63011 / Ph. (888) 896-2101 / Fax (888) 896-2101 / info@chameleonltg.com

WWW.CHAMELEONLTG.COM

Specifications subject to change without notice.

CATALOG NUMBER: \_\_\_\_\_

TYPE: \_\_\_\_\_

JOB NAME: \_\_\_\_\_

NOTES: \_\_\_\_\_

\_\_\_\_\_

\_\_\_\_\_

\_\_\_\_\_

### LED MODULE

Lumiled LED 2200K – 6500K  
Consistent lumen output throughout all CCT, CRI 80  
SV2-14 Minimum of 3000 delivered lumens

### THERMAL MANAGEMENT

Die Cast aluminum heat sink with venting to ensure maximum heat dissipation. 50,000 minimum L70

### CONSTRUCTION

Die Cast Aluminum housing with 18 GA steel chassis

### ELECTRICAL

120-277V input power supply.

Wireless mesh network for color tuning and dimming with a minimum light level of 1%. (HMI and Bluetooth device required for wireless control)

Fixture can be factory set to any of the following static temperatures with 0 - 10V dimming:  
2200, 2400, 2700, 3000, 3500, 4000, 5000 or 6500K  
127 Zones for control

For other control including motion and photo sensors as well as DMX, consult factory

### LISTING

ETL for US and Canada suitable for damp location DLC Pending

### WARRANTY

5 years

### MOUNTING

Can be surface, stem, or cable mounted  
\*\*See accessories page for more information.

### SIZE

SV2-14 15.5" Diameter with clips X 2.75" height

