

ACRYLIC BEAMS - LINEAR SURFACE



LED MODULE

- Samsung LED
- 3000K, 3500K, 4000K • >80 CRI
- LN2 Minimum of 3000 delivered lumens at 22 watts
- LN4 Minimum of 6500 delivered lumens at 46 watts

DRIVER OPTIONS

Programmable driver (dim to 0%)
*Consult factory for other wattages

CONSTRUCTION

20 GA Steel with Integral Driver

ELECTRICAL

120-277V input power supply.

LISTING

UL for US and Canada. Suitable for damp location

WARRANTY

5 Year Full Warranty

MOUNTING

Surface

ADDITIONAL OPTIONS

Sensors

BUILD YOUR PRODUCT

Grayed areas are codes for creating your lighting catalog #
EXAMPLE CATALOG # **BMS-24L-S-LN2/LN2-30-8/CHA-EM**

STYLE	SIZE	FINISH	LIGHT SOURCE	LIGHT SOURCE	COLOR TEMP.	CRI
<input type="checkbox"/> BMS	<input type="checkbox"/> 24L	<input type="checkbox"/> S Silver <input type="checkbox"/> W Wood <input type="checkbox"/> Z Bronze	<input type="checkbox"/> LN2 2ft Linear Fixture	<input type="checkbox"/> LN2	<input type="checkbox"/> 30 3000 <input type="checkbox"/> 35 3500 <input type="checkbox"/> 40 4000	<input type="checkbox"/> 8 >80
<input type="checkbox"/> BMS	<input type="checkbox"/> 48L	<input type="checkbox"/> S Silver <input type="checkbox"/> W Wood <input type="checkbox"/> Z Bronze	<input type="checkbox"/> LN4 4ft Linear Fixture	<input type="checkbox"/> LN4	<input type="checkbox"/> 30 3000 <input type="checkbox"/> 35 3500 <input type="checkbox"/> 40 4000	<input type="checkbox"/> 8 >80

OPTIONAL EMERGENCY BACKUP (FIELD INSTALLED)

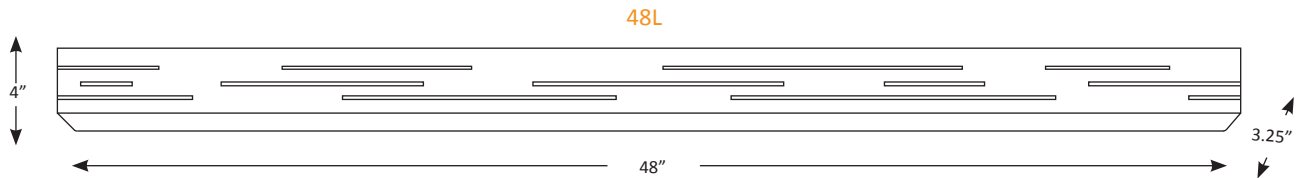
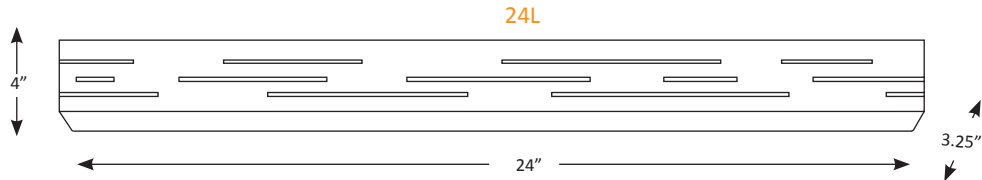
- CHA-EM-ITA Yes
- (blank) No

ACRYLIC BEAMS - LINEAR SURFACE



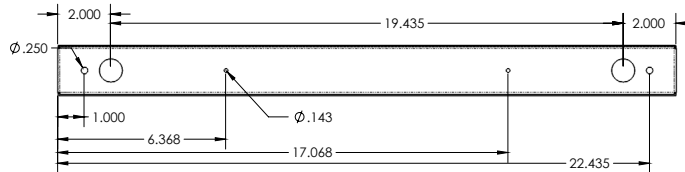
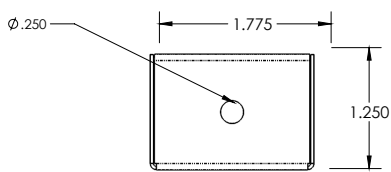
LED MODULE	<ul style="list-style-type: none"> • Samsung LED • 3000K, 3500K, 4000K • >80 CRI • LN2 Minimum of 3000 delivered lumens at 22 watts • LN4 Minimum of 6500 delivered lumens at 46 watts
DRIVER OPTIONS	Programmable driver (dim to 0%) *Consult factory for other wattages
CONSTRUCTION	20 GA Steel with Integral Driver
ELECTRICAL	120-277V input power supply.
LISTING	UL for US and Canada. Suitable for damp location
WARRANTY	5 Year Full Warranty
MOUNTING	Surface
ADDITIONAL OPTIONS	Sensors

ADDITIONAL SHADE DIMENSIONS

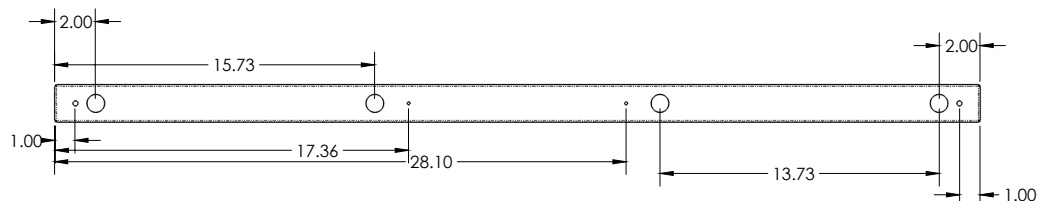
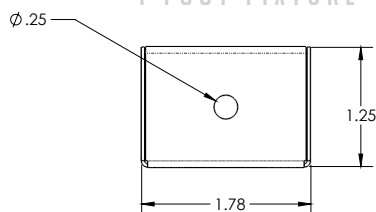


LINE DRAWINGS OF LIGHT SOURCE

2 FOOT FIXTURE



4 FOOT FIXTURE



8 FOOT FIXTURE ALSO AVAILABLE - CONTACT FACTORY

*** Specifications subject to change without notice.