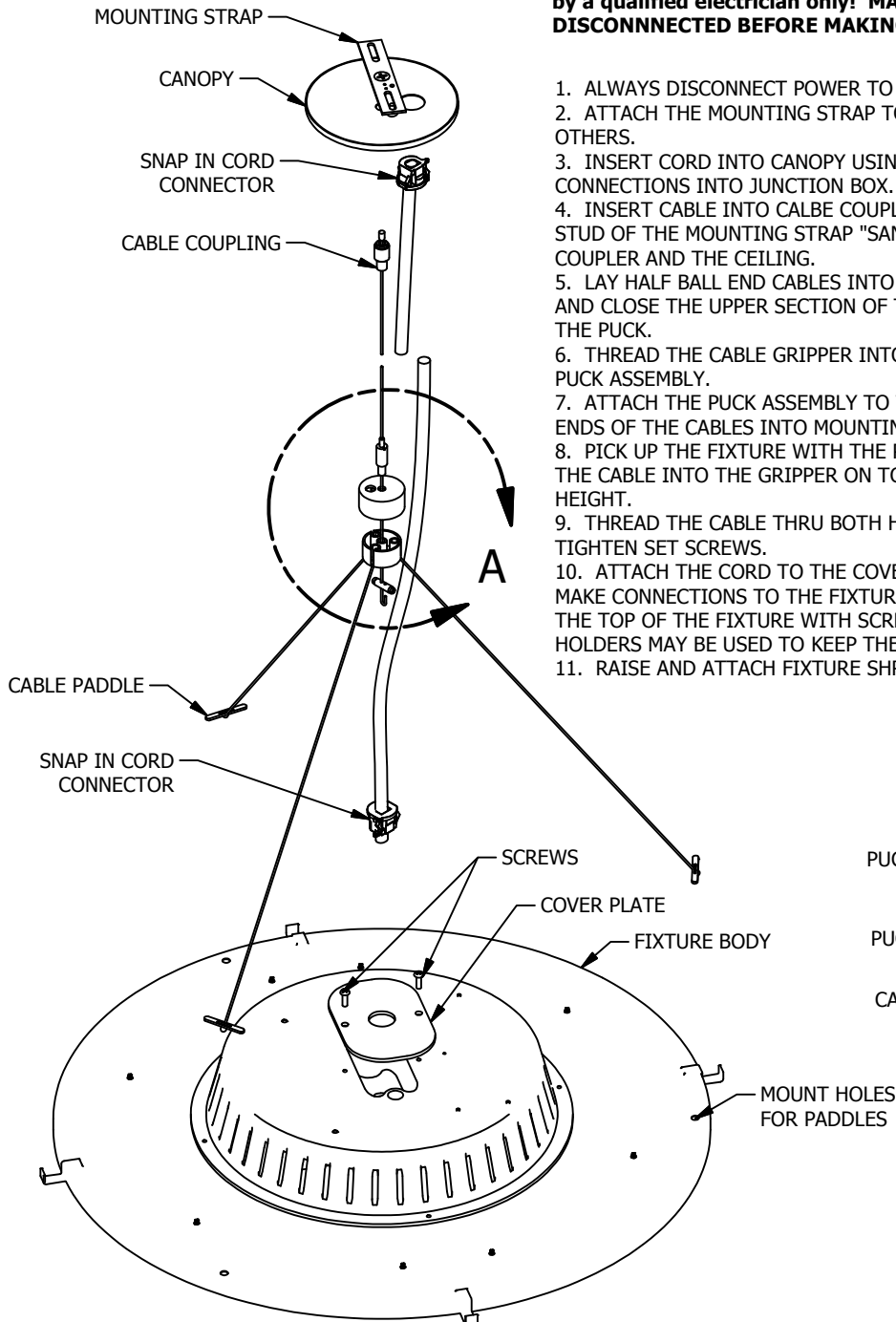


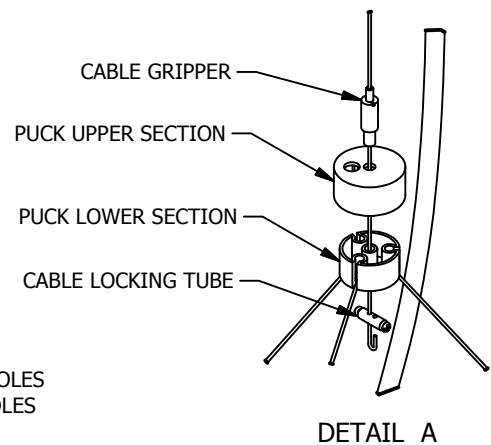
CHAMELEON LIGHTING

INSTALLATION INSTRUCTIONS FOR FIXTURE: CORD & CABLE KIT FOR SV2

WARNING: Risk of fire and electric shock! This fixture must be installed by a qualified electrician only! MAKE SURE ELECTRICAL CURRENT IS DISCONNECTED BEFORE MAKING ELECTRICAL SPLICES.



1. ALWAYS DISCONNECT POWER TO UNIT BEFORE INSTALLATION OR SERVICING.
2. ATTACH THE MOUNTING STRAP TO A 4" OCTAGONAL BOX WITH HARDWARE BY OTHERS.
3. INSERT CORD INTO CANOPY USING A SNAP-IN STRAIN RELIEF THEN WIRE CONNECTIONS INTO JUNCTION BOX.
4. INSERT CABLE INTO CALBE COUPLER AND ATTACH CABLE COUPLER ONTO THE STUD OF THE MOUNTING STRAP "SANDWICHING" THE CANOPY BETWEEN THE COUPLER AND THE CEILING.
5. LAY HALF BALL END CABLES INTO THE LOWER SECTION OF THE CABLE PUCK AND CLOSE THE UPPER SECTION OF THE PUCK OVER THE TOP OF THE BOTTOM OF THE PUCK.
6. THREAD THE CABLE GRIPPER INTO THE TOP OF THE PUCK COMPLETING THE PUCK ASSEMBLY.
7. ATTACH THE PUCK ASSEMBLY TO THE FIXTURE BY DROPPING THE PADDLE ENDS OF THE CABLES INTO MOUNTING HOLES ON THE FIXTURE.
8. PICK UP THE FIXTURE WITH THE PUCK ASSEMBLY AND THREAD THE END OF THE CABLE INTO THE GRIPPER ON TOP OF THE PUCK. ADJUST TO DESIRED HEIGHT.
9. THREAD THE CABLE THRU BOTH HOLES IN ON THE CABLE LOCKING TUBE AND TIGHTEN SET SCREWS.
10. ATTACH THE CORD TO THE COVER PLATE WITH A SNAP-IN STRAIN RELIEF, MAKE CONNECTIONS TO THE FIXTURE WIRES AND SECURE THE COVER PLATE TO THE TOP OF THE FIXTURE WITH SCREWS SUPPLIED. CABLE TIES OR CABLE OCRD HOLDERS MAY BE USED TO KEEP THE CORD TOWARD THE CABLE SUSPENSION.
11. RAISE AND ATTACH FIXTURE SHROUD. TURN POWER BACK ON TO UNIT.



**ASSEMBLY IS RATED FOR 50 LBS.
STATIC LOADS ONLY
(NO DYNAMIC OR MOVING LOADS)
NOT FOR CHEMICAL OR POOL
CORROSIVE ENVIRONMENTS**